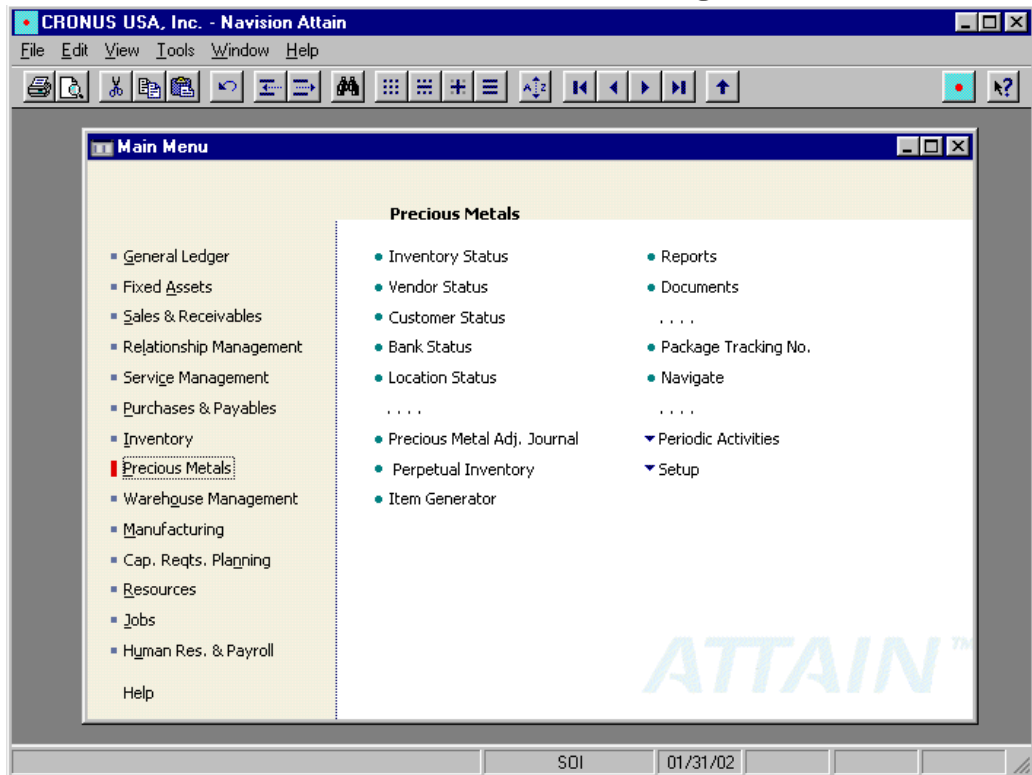


The Jeweler's Edge



The Jeweler's Edge ERP software provides Jewelry Wholesale Manufacturers the power needed to automate every aspect of their business from the manufacturing and procurement process to customer relationships. The Jeweler's Edge offers complete record keeping and precious metals tracking with full system integration. It also provides customer and vendor history, detailed precious metal tracking statistics, and summary or detailed reporting on aspects of business operations.

User Defined Costing and Pricing

The Jeweler's Edge allows you to define an unlimited number of item costing and pricing formulas. All formulas are tied to the current market rate, which can be updated as often as necessary on a daily, hourly or minute-by-minute basis. This flexibility is enhanced by over 20 user-defined variables making sure that the system can handle even the most complex costing and pricing schemes.

Complete Precious Metal Tracking

The Jeweler's Edge provides comprehensive precious metal tracking allowing you to instantly see current on-hand quantities for all inventory items. These amounts are displayed by user-defined standard quantities, as well as, by gram and troy ounces. Utilizing system reports and on-screen forms you are able to view both current and historical metal balances for all customers, vendors, and banks. Month-end reporting and precious metal audits are only a few keystrokes away making both management and bank reporting a snap. The ability to reprint historical data means you no longer need to shut down operations to run month-end reports.

Flexible Units of Measure

The Jeweler's Edge allows you to define an unlimited number of tracking units for each defined inventory item. In addition, the system allows you to control how the item is tracked, purchased, sold, and valued. This allows you to track and value the item by weight, purchase it by the inch, and sell it by the piece. In each case the system allows you to change the unit of measure on the fly and instantly makes all necessary adjustments ensuring that the item has the correct cost and selling price.

Advanced Order Entry

The integrated structure of The Jeweler's Edge transforms accounts receivable into a true customer service management system with the ability to automate every aspect of your customer relationships. Quickly and easily handle all areas of the sales process from quoting to finished invoicing. Define item pricing, discounts, and customer defaults on customer-by-customer bases. With The Jeweler's Edge detailed customer history is never more than a couple of keystrokes away. Added to the extensive history is the ability to reprint system reports from posted sales invoices to historical Age Trial Balances. Never again will you be forced to fumble through mountains of printed reports to get needed information. Added to the customer care set of tools is a fully functionally contact management system. Quickly and easily manage company-marketing tasks and maintain detail information on all your contacts and prospects. When the order is placed, a simple click of the mouse converts collected prospect information into customer data.



Full Inventory & Manufacturing Control

The Inventory module is the heart of The Jeweler's Edge ERP system providing extensive control and item tracking. The precious metals screen allows you to enter all necessary variables to accurately cost and price each item you sell. From the main Item Card you are able to see the current metal rates and the current cost and selling price of each item. As the variables change the system automatically recalculates the base cost and price allowing you to instantly see the results of any configuration changes. The On Hand tab provides real-time information with respect to quantity, grams and troy ounces in inventory, quantities on purchase orders, and quantities on sales orders. Detail information is just a click away providing easy drilldown access to all historical purchases, sales and adjustments.

1928-S 18" 14K Box Chain - Item Card

General | Invoicing | Ordering | Reporting | Market Pricing | Market Setup

Type: Gold
 Karat Conversion: 14K/AU
 Volume Piece Sell: 0.00
 Mfg. Piece Sell: 0.00
 Piece Inc. Over Peg: 0.00
 Piece Inc.: 0.00
 Volume Weight Sell: 11.48
 Mfg. Weight Sell: 10.21
 Weight Sell Inc.: 0.02
 Weight Sell Inc. Over: 0.025
 Labor Sell Gram: 3.67

Labor Gram Lire: 0.24
 Labor Piece Lire: 0.00
 Mfg. Loss: 0.33
 Labor Gram USD: 3.14
 Labor Piece USD: 0.00
 Company Cost: 0.00
 Cost Increment: 0.00
 Company Premium: 0.15
 Premium Charge: 0.26
 Average Weight: 3.50
 Disc. Weight: 0.00
 Duty: 0.01
 Freight: 0.01
 Metal Weight: 0.00
 Fixed Avg. Weight: 3.61

Current Cost/Sell Info
 Today's Cost Price: 5.11
 Today's Sell Price: 6.25

Gold: 278.00 | Silver: 4.24 | Platinum: 643.00

The Jeweler's Edge brings this same level of control to the precious metal area allowing you to buy, sell, manufacturer and barter any type of precious metal. Buy, sell or transfer troy metal between any customer, vendor or bank and retain an audit trail of all transactions. On-screen viewing and detail reporting allows you to see the current balances for all entered vendors, customers and banks in both grams and troy ounces and as with on-hand quantities the detail behind any value is never more than a mouse click away. You can even make gram adjustments via the Gram Adjustment Journal to insure that all inventories are accurate to within 0.00001 grams.

1001 The Cannon Group PLC - Sales Order

General | Invoicing | Shipping | Precious Metals

No.: 1001 | Posting Date: 01/06/00
 Sell-to Customer No.: 10000 | Order Date: 01/06/00
 Sell-to Customer Name: The Cannon Group PLC | Document Date: 01/06/00
 Sell-to Address: 192 Market Square | Customer PO#:
 Sell-to Address 2: | Salesperson Code: PS
 Sell-to City: Atlanta | Order Taker:
 Sell-to State / ZIP Code: GA 30117-6611 | Picker:
 Sell-to Contact: Mr. Jeremy Brown | Checker:

T. No.	Type	Description	Rate	Karat	Quantity	Gram	Unit of	Unit Price
1928-S	Item	18" 14K Box Chain	Gold	14K/AU	S	3.5 GRAM		6.256

Technology Made Easy

The Jeweler's Edge takes full advantage of the latest technology by providing a fully relational, client server database in an easy 32-bit, 4GL development system. System modifications are quick and easy and full source code access is provided with each installation. Access to all your other applications, such as, Microsoft Office® or Microsoft SQL® is easy and seamless. In addition, The Jeweler's Edge can be quickly setup for Business-2-Business or On-Line Internet sells. Accessing the system via a wireless phone (WAP) is also a snap.

Precious Metal Rate Input Form

Precious Metal: Gold

Precious Metal Rate Input Form

Precious Metal: Silver

Precious Metal Rate Input Form

Precious Metal: Platinum

Date	Rate
06/18/00	542.00
06/19/00	555.00
06/20/00	570.00
06/21/00	563.00
06/22/00	572.00
06/23/00	560.00
06/26/00	579.00
06/27/00	564.00
06/28/00	575.00
06/29/00	572.00
06/30/00	558.00

The Jeweler's Edge is also fully compliant with all the latest industry standards including, XML, XBRL, ASP, and HTML. In addition, it is fully compliant with the Microsoft® family of products and carries the Designed for Microsoft XP, 98/NT, Microsoft Office 2000 Compatible, and Designed for Microsoft Windows/Server 2000 product logos. This ensures that data entered into The Jeweler's Edge can be easily passed to any other Microsoft compliant software.

We at Solution One, Inc. have designed The Jeweler's Edge on five basic fundamentals to make sure that this will be the last software purchase your company needs to make:

- easy to learn and comfortable to use
- easy to remember and efficient to use
- easy to correct mistakes
- easy to support and maintain
- easy to customize

WILCOMP LLC
 1240 Jefferson Rd
 Rochester, New York 14623
 585.368-5080
 fax: 585.368-5081
www.wilcomp.com

